



MARIANO MARCOS STATE UNIVERSITY

Bids and Awards Committee

INVITATION TO MAKE AN OFFER: Negotiated Procurement

21-011-2

THE PROJECT: Refurbishment of Career Hub Center, Student Center Building

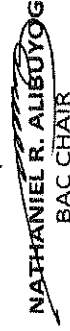
Number of Working Days: 75 calendar days

ABC: P899,273.55

1. The Mariano Marcos State University (MMSU), with offices at Quiling Sur, City of Batac, Ilocos Norte, invites the public to make an offer to furnish all labor, materials, tools and equipment necessary and proper for the implementation of the above Project as per approved designs, plans and drawings.
2. This process is in accordance with Section 53 of R.A. 9184, the Government Procurement reform Act and Section 53.9 of the Implementing Rules and Regulations where interested and qualified contractors are to submit proposals.
4. The offer must be in writing submitted at the address below on or before **October 20, 2021; 2:00 PM** together with the following documents:
 - a) The amount of the offer in writing duly signed by the person making the offer, indicated in numbers and figures.
 - b) The particulars of the offer as to labor, materials, tools, equipment and other work details.
 - c) Documents in support of the legal, technical and financial capability of the person making the offer, which documents shall be confirmed and verified (3 copies).
5. It is understood that any offer may be accepted or rejected, or the process invalidated, at any time prior to contract award, without liability to anyone.
6. Documents for this procurement may be secured from the MMSU BAC Secretariat at the address below or downloaded from the MMSU website or from the Philippine Government Electronic Procurement System (PhilGEPS) website.
7. For questions and inquiries, please write or email the University President, thru the BAC Chair, at the address indicated below.

Mariano Marcos State University
 Quiling Sur, City of Batac
 www.mmsu.edu.ph _____

October 15, 2021

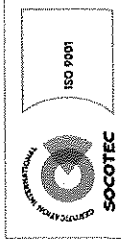

NATHANIEL R. ALIBUYOG
 BAC CHAIR

Received: _____
 Received: _____
 Received: _____

Rm105 FEM Hall, MMSU, #16S Quiling Sur, City of Batac, Ilocos Norte
 bac@mmsu.edu.ph ☎ (077) 600-0459 www.mmsu.edu.ph



STARS™
 RATING SYSTEM



Republic of the Philippines
MARIANO MARCOS STATE UNIVERSITY
Batac City 2906, Ilocos Norte

Project Information Document

PROJECT TITLE: Refurbishment of Career Hub Center, Student Center Building
PROJECT LOCATION: MMSU Batac Campus, Ilocos Norte

The construction procedures shall be done in accordance with standard specifications and in full compliance with the approved plans and this **Project Information document**.

Pertinent notes appearing in the **Contract Plans or Drawings** shall also be considered as part and parcel of this **Project Information Document**. Such notes shall take precedence over the **General Specifications**.

1. Roughing Works

This item shall consist of labor for the Clearing the area prior to construction and installation and cleaning of the area after the project is completed. The Contractor is mandated to assist to where existing equipment in the area are to be temporarily placed. Coordination to the Project in-charge from the University or end-user is a must.

2. Millworks

This item shall consist of furnishing all materials, hardware, tools, labour and services necessary for complete fabrication and installation of aluminium glass partitions and the type and size as shown on the Plans and in accordance with the specifications. The contractor is required to submit sample of materials to be used prior to fabrication and installation under this scope of work. Aluminum Glass partition shall be measured and paid for on the basis of number of sets completely installed and accepted by the *Engineer*.

3. Furnitures

This item of work includes different types of furniture. This includes material, fabrication, delivery and installation.

Bulletin Board:

1.20m x 2.40m Wall Signboard, Printed LED Lightbox Signs. Prior to purchasing the Contractor is advised to coordinate to the project incharge or the enduser for approval of the said material.

Lounge Area:

Conference Room Table and Chairs (for 8 persons), Couch Set with mini table, Decorative Partition Wall, 0.50m x 1.8m x 0.65mheight Floor Moundtd Cabinet/Drawer/File Storage. Prior to purchasing the Contractor is advised to coordinate and show sample or brochures to the project incharge or the enduser for approval of the said material.

Counseling Area:

Chairs, 2.10m x 1.00m Conference Table, 0.60m dia. Glass table with Stand. Prior to purchasing the Contractor is advised to coordinate and show sample or brochures to the project incharge or the enduser for approval of the said material.

Computer Room:

Modular Partition and Tables with chairs (for 10 person). Prior to purchasing the Contractor is advised to coordinate and show sample or brochures to the project incharge or the enduser for approval of the said material.

Benches:

2.20m length Metal Bench with backrest. Prior to purchasing the Contractor is advised to coordinate and show sample or brochures to the project incharge or the enduser for approval of the said material.

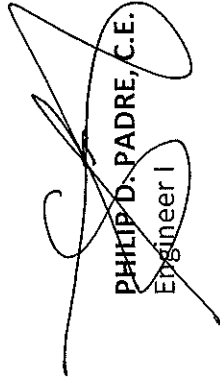
After all the works have been completed, the surrounding immediate areas affected in the prosecution of the project shall be cleaned and cleared of all excess materials and debris, temporary structures, facilities and utilities used during the construction period.

A. Time is a very important factor in the implementation of this project and as such, all works indicated in the plans, specifications and in this document shall be completed within - **75- calendar days** from receipt of the Notice to Proceed;

B. The contractor, before turning over the completed project to the University, shall clean the areas covered by the contract and dispose all construction debris and wastes;

1. The Approved Budget for the Project to be bid is **Eight Hundred Ninety-Nine Thousand Two Hundred Seventy-Three and 55/100 Pesos (Php. 899,273.55)**.
2. All bids must be submitted to the BAC Chairman, MMSU-Batac, Ilocos Norte not later than _____.

Prepared by:

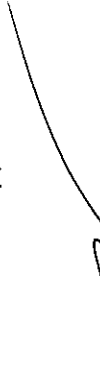


PHILIP D. PADRE, C.E.
Engineer I

Checked by:

AIDA V. CABANG
Architect IV, Chief Planning

Recommend Approval:



ROMEO R. DUEDETO
Director, PPDO

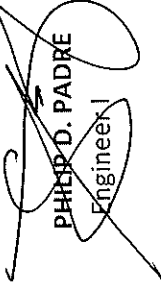


SPECIFICATION

Project Title: Rehabilitation of Career Hub Center
 Project Location: MMSU, City of Batac, Ilocos Norte

| ITEM NO. | DESCRIPTION |
|----------|--|
| I. | Roughing Works Site Preparation Clearing and Cleaning |
| II. | Millworks Materials, hardware, tools, labour and services necessary for fabrication and installation Aluminum Glass Partition Aluminum Glass Doors |
| III. | Furnitures Bulletin Board: 1.20m x 2.40m Wall Signboard, Printed LED Lightbox Signs (Sticker design and presentation designs to be provided by the end-user) Lounge Area: Conference Room Table and Chairs (for 8 persons) Couch Set with mini table Decorative Partition Wall 0.50m x 1.8m x 0.65mheight Floor Mounded Cabinet/Drawer/File Storage Counseling Area: Chairs 2.10m x 1.00m Conference Table 0.60m dia. Glass table with Stand Computer Room: Modular Partition and Tables with chairs (for 10 person) Benches: 2.20m length Metal Bench with backrest |

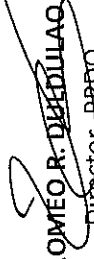
Prepared By:


PHILIP D. PADRE
 Engineer

Checked by:


AIDA V. CABANG
 Architect IV, Chief Infra.

Recommending Approval:

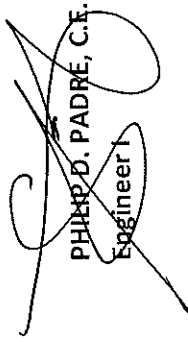

ROMEO R. DE DILLAO
 Director, PPD0

Title: Refurbishment of Career Hub Center
 Location: MMSU, City of Batac, Ilocos Norte

Bill of Quantities

| Item No. | Description | Quantity | Unit |
|-------------|--|----------|-------|
| I. | Roughing Works | | |
| | Building Permits and Clearances | 1 | lot |
| II. | Millworks | | |
| | Aluminum Glass Partition | 1 | lot |
| | Aluminum Glass Doors | | |
| III. | Furnitures | | |
| | <i>Bulletin Board:</i> | | |
| | 1.20m x 2.40m Wall Signboard, Printed LED Lightbox Signs (Sticker design and presentation designs to be provided by the end-user) | 2 | units |
| | <i>Lounge Area:</i> | | |
| | Conference Room Table and Chairs (for 8 persons) | 1 | set |
| | Couch Set with mini table | 1 | set |
| | Decorative Partition Wall | 1 | set |
| | 0.50m x 1.8m x 0.65mheight Floor Mounded Cabinet/Drawer/File Storage | 1 | set |
| | <i>Counseling Area:</i> | | |
| | Chairs | 20 | sets |
| | 2.10m x 1.00m Conference Table | 1 | set |
| | 0.60m dia. Glass table with Stand | 6 | sets |
| | <i>Computer Room:</i> | | |
| | Modular Partition and Tables with chairs (for 10 person) | 1 | set |
| | <i>Benches:</i> | | |
| | 2.20m length Metal Bench with backrest | 4 | sets |

Prepared by:


 PHILIP D. PADRE, C.E.
 Engineer I



INDIVIDUAL PROGRAM OF WORK

| Name/Location of Project: REFURBISHMENT OF CAREER HUB CENTER, Student Center Building | Appropriations: Source of Fund: Issued Obligated Authority: Released: Calendar Days to Complete: Desirable Starting Date: | | | | | | | |
|---|---|-----------------------------|-------------|----------|-------------|---------------|---------------|------------|
| Project Category: 0 Vertical Construction | | | | | | | | |
| Project Description: | | | | | | | | |
| Minimum Equipment Requirement | No. | Technical Personal Required | Description | Number | | | | |
| | | | | | | | | |
| | | | | | | | | |
| | | | | | | | | |
| | | | | | | | | |
| | | | | | | | | |
| | | | | | | | | |
| | | | | | | | | |
| | | | | | | | | |
| ESTIMATED COST OF PROPOSED WORK | | | | | | | | |
| Item No. | Description | % of Total | Unit | Quantity | Direct Cost | Indirect Cost | Adjusted Cost | Total Cost |
| I | Roughing Works | | | | | | | |
| II | Millworks | | | | | | | |
| III | Furnitures | | | | | | | |
| Total | | | | | | | | |



DETAILED ESTIMATES

| | |
|------------------------------------|------------|
| Item No.: 1 | Quantity: |
| Description: Roughing Works | Unit: |
| | lot |

| | Description | Quantity | Unit | Unit Price | Sub-Total |
|-----------------------|----------------------|----------|------|------------|-----------|
| MATERIALS COST | Total Materials Cost | | | Sub-Total | |
| | | | | Unit Cost | |
| | | | | | |
| EQUIPMENT COST | Description | Quantity | Unit | Unit Price | Sub-Total |
| | Total Equipment Cost | | | Sub-Total | |
| | | | | Unit Cost | |
| LABOR COST | Description | Quantity | Unit | Unit Price | Sub-Total |
| | Total Labor Cost | | | Sub-Total | |
| | | | | Unit Cost | |

DIRECT COST:
 DIRECT UNIT COST:

Plus Indirect Cost:
 OCM
 VAT
 Indirect Unit Cost:

Total Direct and Indirect Cost:

Republic of the Philippines
MARIANO MARCOS STATE UNIVERSITY
 City of Batac, 2906, Ilocos Norte

DETAILED ESTIMATES

| | | | |
|--------------|-----------|-----------|------|
| Item No.: | II | Quantity: | 1.00 |
| Description: | Millworks | Unit: | lot |

| | Description | Quantity | Unit | Unit Price | Sub-Total | |
|-----------------------|--|----------|-------|------------|-----------|---|
| MATERIALS COST | Partition: | | | | | |
| | 7.20m x 2.80m Aluminum Analok with Frosted Sticker (Entire Glass Area), with 1/2"thick Clear Glass | | units | | | |
| | 1.65m x 2.80m Aluminum Analok with Frosted Sticker (Entire Glass Area), with 1/2"thick Clear Glass | | units | | | |
| | 1.65m x 2.10m Aluminum Analok with Frosted Sticker (Entire Glass Area), with 1/2"thick Clear Glass | | units | | | |
| | 1.25m x 2.10m Aluminum Analok with Frosted Sticker (Entire Glass Area), with 1/2"thick Clear Glass | | units | | | |
| | 4.50m x 2.80m Aluminum Analok with Frosted Sticker (Entire Glass Area), with 1/2"thick Clear Glass | | unit | | | |
| | Doors: | | | | | |
| | 0.80m x 2.10m Framless Glass Door (1/2" Thick glass) | | units | | | |
| | Note: This Includes Material, Fabrication, Delivery and Installation | | | | | |
| | Total Materials Cost | | | | Sub-Total | - |
| | | | | Unit Cost | - | |
| EQUIPMENT COST | Description | Quantity | Unit | Unit Price | Sub-Total | |
| | Total Equipment Cost | | | | Sub-Total | |
| | | | | | Unit Cost | |
| | Description | Quantity | Unit | Unit Price | Sub-Total | |
| | Total Labor Cost | | | | Sub-Total | |
| | | | | Unit Cost | | |

DIRECT COST:
 DIRECT UNIT COST:

Plus Indirect Cost:
 OCM
 VAT
 Indirect Unit Cost:

Total Direct and Indirect Cost:

Republic of the Philippines
MARIANO MARCOS STATE UNIVERSITY
 City of Batac, 2906, Ilocos Norte

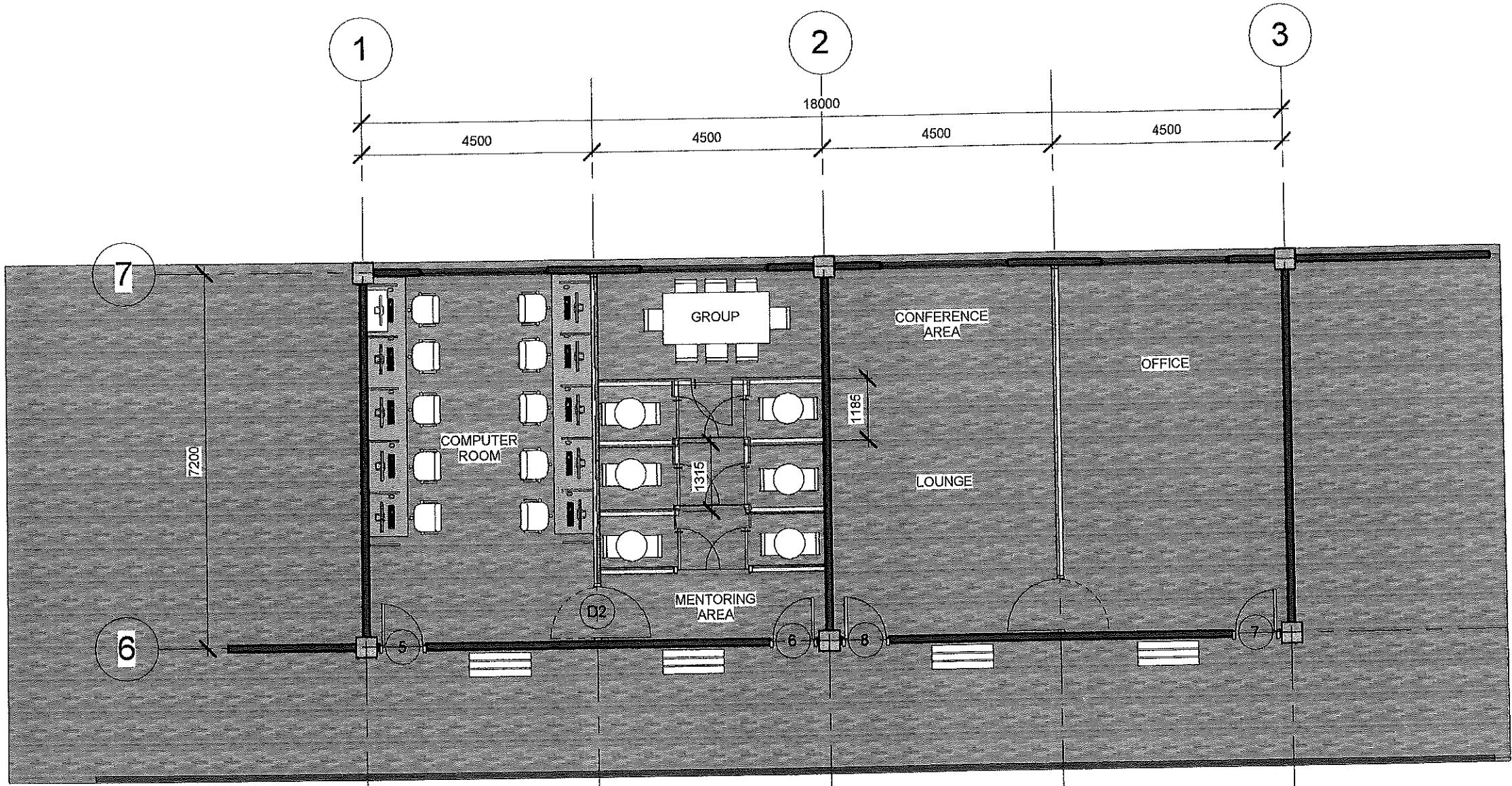
DETAILED ESTIMATES

| Item No.: | Quantity: | Unit Price | Sub-Total | |
|---|---|------------|------------|---|
| III | Unit: | lot | 1.00 | |
| Description: Furnitures | | | | |
| MATERIALS COST | Bulletin Board: 1.20m x 2.40m Wall Signboard, Printed LED Lightbox Signs (Sticker design and presentation designs to be provided by the end-user) | units | | |
| | Lounge Area: Conference Room Table and Chairs (for 8 persons) | set | | |
| | Couch Set with mini table | set | | |
| | Decorative Partition Wall | set | | |
| | 0.50m x 1.8m x 0.65mheight Floor Mounded Cabinet/Drawer/File Storage | set | | |
| | Counseling Area: Chairs | sets | | |
| | 2.10m x 1.00m Conference Table | sets | | |
| | 0.60m dia. Glass table with Stand | sets | | |
| | Computer Room: Modular Partition and Tables with chairs (for 10 person) | sets | | |
| | Benches: 2.20m length Metal Bench with backrest | sets | | |
| Note: This Includes Material, Fabrication, Delivery and Installation | | | | |
| | Total Materials Cost | Sub-Total | | |
| | | Unit Cost | | |
| EQUIPMENT COST | Description | Quantity | Unit Price | |
| | | Unit | Sub-Total | |
| | Total Equipment Cost | | Sub-Total | - |
| | | | Unit Cost | - |
| LABOR COST | Description | Quantity | Unit Price | |
| | | Unit | Sub-Total | |
| | Total Labor Cost | | Sub-Total | |
| | | | Unit Cost | |

DIRECT COST:
DIRECT UNIT COST:

Plus Indirect Cost:
OCM
VAT
Indirect Unit Cost

Total Direct and Indirect Cost:



FLOOR PLAN



PROJECT TITLE:

REFURBISHMENT OF CAREER HUB CENTER

LOCATION: MMSU-CRL, CITY OF BATAAC, ILOCOS NORTE

CAD/PREPARED BY:

PHILIP D. PADRE
ENGINEER I

AIDA V. CABANG
ARCHITECT IV, CHIEF W/FRA

RECOMMENDING APPROVAL:

ROMEO R. DULOLAO
DIRECTOR, FPDD

APPROVED BY:

GERALDEEN B. PASUAL
END-USER

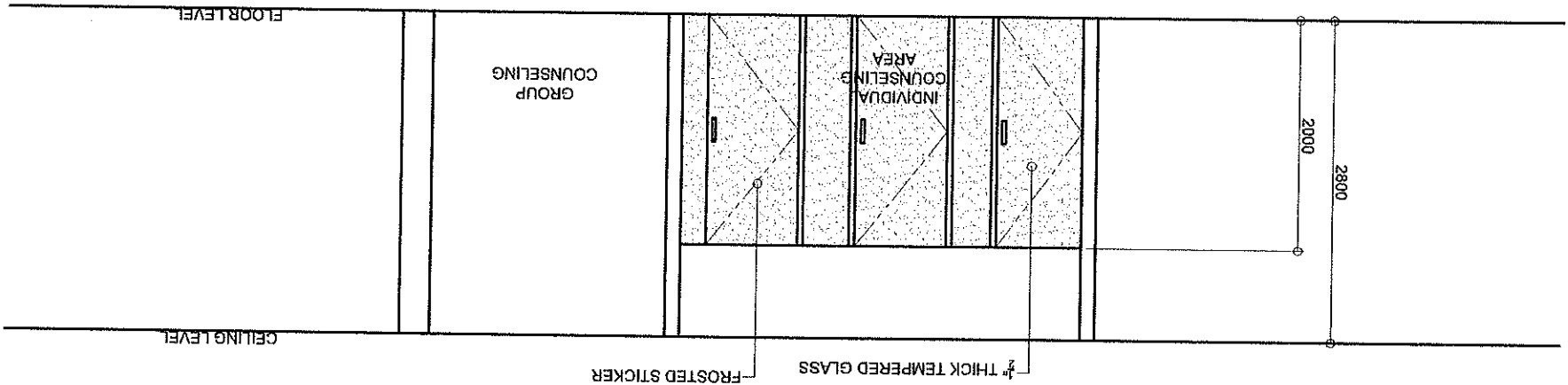
SHIRLEY C. AGRUPIS
UNIVERSITY PRESIDENT

SHEET NO.

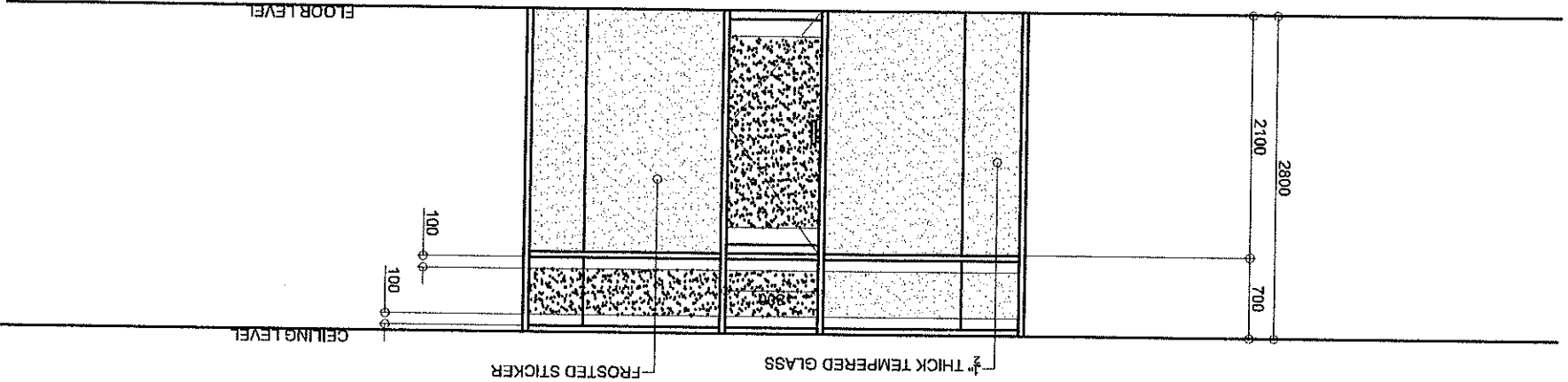
SHEET CONTENT:

AS SHOWN

PARTITION 4 DETAIL



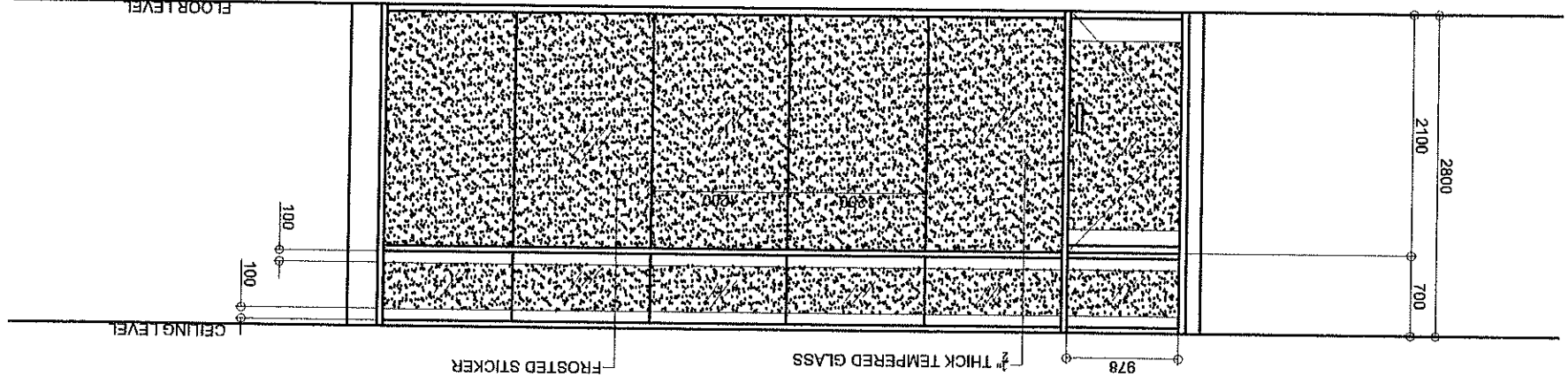
PARTITION 3 DETAIL



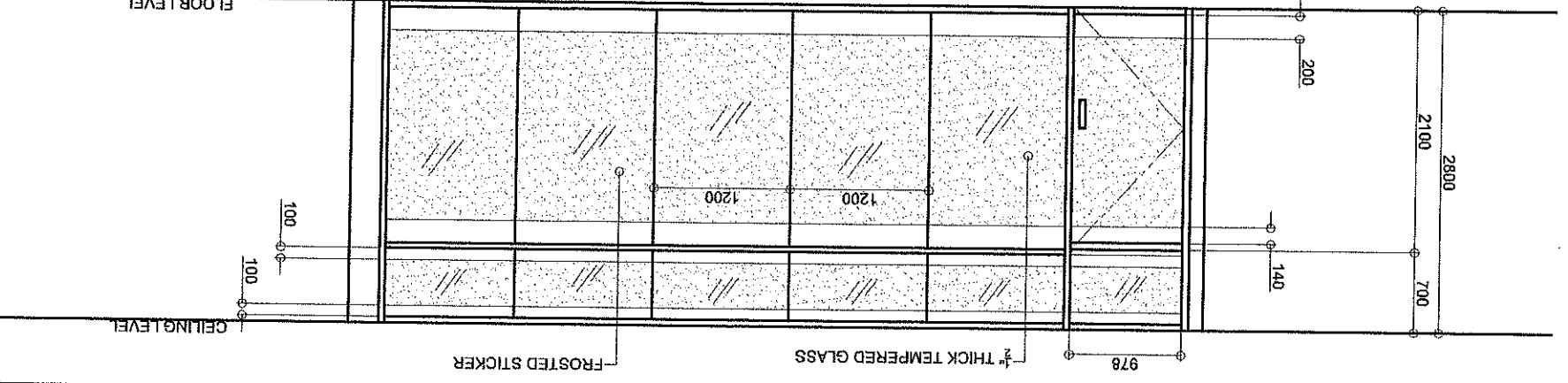


| | | | | | |
|--|--|--|----------------------------|--|--------------------|
| PROJECT TITLE: REFURBISHMENT OF CAREER HUB CENTER | | CAD/PREPARED BY: _____ | CHECKED/REVIEWED BY: _____ | RECOMMENDING APPROVAL: _____ | APPROVED BY: _____ |
| LOCATION: MMSU-CRL, CITY OF BATAAC, ILOCOS NORTE | | END-USER: GERALDEEN B. PASUAL | | | |
| SHEET NO. _____ | | SHEET CONTENT: _____ | | | |
| AS SHOWN | | CONFORMS: | | | |
| PAGE NO. _____ | | APPROVED BY: _____ | | | |
| | | PHILIP D. PADRE ENGINEER | | ROMEO R. DULDALAO DIRECTOR, PPDD | |
| | | AIDA V. CABANG ARCHITECT W/ CHIEF INFR. | | SHIRLEY O. AGRUPIS UNIVERSITY PRESIDENT | |

PARTITION 2 DETAIL



PARTITION 1 DETAIL



| | | | | | | | |
|------------------------------------|--|---|--|------------------------------------|--|--|--|
| PHILIP D. PADRE ENGINEER | | AIDA V. GABANG ARCHITECT IV, CHIEF IN-CHARGE | | ROMEO R. DULDULAO DIRECTOR, PPD | | SHIRLEY C. AGRUPIS UNIVERSITY PRESIDENT | |
| CAD/PREPARED BY: | | CHECKED/REVIEWED BY: | | RECOMMENDING APPROVAL: | | APPROVED BY: | |
| PROJECT TITLE: | | LOCATION: | | END-USER: | | PAGE NO. | |
| REFURBISHMENT OF CAREER HUB CENTER | | MMSU-CRL, CITY OF BATAAC, ILOCOS NORTE | | GERALDEEN B. PASCUAL | | AS SHOWN | |
| SHEET NO. | | CONFORME: | | SHEET CONTENT: | | SHEET NO. | |

